

PageFlip Dragonfly

Bluetooth/USB Pedal

User Guide



Legal Notice

Copyright ©2018 PageFlip Inc. All rights reserved.

Information in this document is subject to change without notice. All statements, information, and recommendations in this manual are believed to be accurate but may include inadvertent technical inaccuracies or typographical errors. PageFlip Inc. provides this information “as is”, without warranty of any kind, either expressed or implied, including any implied warranties of merchantability or fitness for a particular purpose. No part of this manual may be reproduced, stored in a retrieval system, or transmitted in any form or any means electronic or mechanical, including photocopying and recording for any purpose other than the purchaser’s personal use without the consent of PageFlip Inc.

PageFlip Inc.
Woodmere, NY 11598
USA

www.pageflip.com
support@pageflip.com

Version 2.0
April 24, 2018

PageFlip Dragonfly User Guide

FCC/CE Notice

This device complies with Part 15 of the FCC Rules. Operation is subject to the following two conditions:

- (1) This device may not cause harmful interference, and
- (2) this device must accept any interference received, including interference that may cause undesired operation.

Changes or modifications not expressly approved by the party responsible for compliance could void the user's authority to operate the equipment.

PageFlip Dragonfly
FCC ID: XKEPFDRAGONFLY

This equipment complies with FCC radiation exposure limits set forth for an uncontrolled environment. This equipment should be installed and operated with minimum distance 20cm between the radiator and your body. This transmitter must not be co-located or operating in conjunction with any other antenna or transmitter.

Safety Notice / Warning

Please read the following safety instructions carefully to safely and correctly operate this device. PageFlip assumes no responsibility for property damage or personal injury.

1. Do not place any container filled with liquid on the device.
2. Do not use a voltage other than the specified one.
3. Do not plug AC adapter into socket with wet hands.
4. Always hold case before removing AC adapter plug.
5. Do not disassemble or modify the device.

IC Notice

This device complies with Industry Canada license-exempt RSS standard(s). Operation is subject to the following two conditions:

- (1) This device may not cause harmful interference, and
- (2) this device must accept any interference received, including interference that may cause undesired operation of the device.

Le présent appareil est conforme aux CNR d'Industrie Canada applicables aux appareils radio exempts de licence. L'exploitation est autorisée aux deux conditions suivantes:

- (1) l'appareil ne doit pas produire de brouillage, et
- (2) l'utilisateur de l'appareil doit accepter tout brouillage radioélectrique subi, même si le brouillage est susceptible d'en compromettre le fonctionnement

Under Industry Canada regulations, this radio transmitter may only operate using an antenna of a type and maximum (or lesser) gain approved for the transmitter by Industry Canada. To reduce potential radio interference to other users, the antenna type and its gain should be so chosen that the equivalent isotropically radiated power (eirp) is not more than that necessary for successful communication.

Conformément à la réglementation d'Industrie Canada, le présent émetteur radio peut fonctionner avec une antenne d'un type et d'un gain maximal (ou inférieur) approuvé pour l'émetteur par Industrie Canada. Dans le but de réduire les risques de brouillage radioélectrique à l'intention des autres utilisateurs, il faut choisir le type d'antenne et son gain de sorte que la puissance isotrope rayonnée équivalente (pire) ne dépasse pas l'intensité nécessaire à l'établissement d'une communication satisfaisante.

Contents

1 WELCOME	5
2 FEATURES	8
3 PACKAGE CONTENTS	10
4 BASIC OPERATION	11
4.1 Battery Installation	11
4.2 AC Adapter	12
4.3 Powering On the Pedal	13
4.4 Bluetooth Pairing	14
4.5 Pedal Mode Selection	15
4.6 Reprogramming the Pedal Modes	17
4.7 Triggering the Pedal	20
4.8 Autorepeat Function	21
4.9 Virtual iPad Keyboard	22
4.10 Compatible Apps	22
5 PRODUCT SPECIFICATION	24
6 PRODUCT COMPARISON	25
7 MAINTENANCE	27
8 WARRANTY	28
9 GUARANTEE	29
10 FAQ	30

1 WELCOME

Congratulations on your purchase of the PageFlip Dragonfly Bluetooth/USB quad pedal! This product was designed to meet the needs of musicians, people with disabilities, and avid readers who struggle with the challenge and inconvenience of page turning. PageFlip Dragonfly works exclusively with digital documents, web pages, and image collections on any tablet or computer. The PageFlip Dragonfly features a compact four-pedal design influenced by the four wings of the dragonfly insect, hence the name “Dragonfly.” It allows the user to initiate any of four actions with the touch of a quad pedal that is designed to take up no more space than a standard dual pedal. By simply tapping any of the four pedals on the PageFlip Dragonfly, digital content can now be flipped or scrolled in either the forward or reverse directions for convenient hands-free page turning. The user may also choose to launch other app functions such as navigating to the next song in a setlist, volume control, or toggling the play/pause button on an app.

The PageFlip Dragonfly emulates a standard keyboard and works with any software that uses keyboard strokes to navigate through digital files or activate app functions. For added versatility, the user may select among five preset modes for the quad pedals: VolumeUp/VolumeDown/Stop/Play, Previous/Next/Stop/Play, Left/Right/Up/Down arrow, PageUp/PageDown and Up/Down arrow, and Left/Right mouse click and Space/Enter. Changing modes is as simple as pressing a button. Note that in Play mode, successive taps of the pedal will toggle the app between the play and pause functions. For added versatility, the pedal functions may be reprogrammed with free software available on www.pageflip.com. Simply pair the pedal to a Windows or Mac computer using Bluetooth and run the software to edit the pedal modes. This operation must use Bluetooth, not the USB cable, as the means to connect the pedal to the computer. Editing the

pedal modes permits us to trigger some action in a software application by transmitting any multi-key combination with the tap of the pedal.

The PageFlip Dragonfly is ideal for musicians who can now keep their hands, and their focus, on their instruments rather than struggle with turning sheet music. It is also ideal for people with disabilities who can more easily tap a pedal than attempt to manipulate pages of a standard book or magazine. The convenient mode buttons maximize versatility for use with a wide variety of software to scroll, browse, and navigate through eBooks, PDF files, Word, Powerpoint, web pages, and images.

PageFlip Dragonfly may be operated in wireless or wired mode. Wireless connectivity is achieved via Bluetooth. All Apple products and most modern tablets/computers are equipped with Bluetooth, so this mode is nearly universal. An optional USB Bluetooth dongle is available from www.pageflip.com to interface to computers that are not equipped with Bluetooth 2.1 (or later). If the user prefers wired connectivity, the supplied USB cable can be connected between the pedal and tablet/computer. Note that iPads require an optional Camera Connection Kit to interface with the supplied USB cable.

The PageFlip Dragonfly features LED lighting to emit a discrete glow on each of the four pedals. This lighting permits the pedal to be easily found in orchestra pits, dark stages, and cluttered environments. If the pedal lights are not needed, we recommend using the light switch to turn off the LED lighting to preserve battery life.

The PageFlip Dragonfly goes to sleep after 30 minutes of inactivity. Although a simple tap of the pedal wakes it, the long 30-minute period prevents the user from having to make this effort under most common performance conditions. No other pedal offers such a long inactivity period before entering sleep mode for the benefit of the user.

PageFlip Dragonfly is compact, rugged, silent, and easy to use. Since it works with digital content, it guarantees 100% reliability in turning one page at a time without moving parts or noise. Just pair the pedal with a Bluetooth-enabled computer or connect it to the tablet/computer via the USB cable, open up any digital file, and tap the pedal for hands-free page turning or effects management. Be prepared to enjoy the benefits of the PageFlip Dragonfly Bluetooth/USB pedal!

2 FEATURES

- **Ease of Use**

Simply open a digital file and press either of the primary (larger) pedals of the PageFlip Dragonfly to turn a page forwards or backwards. Tap the secondary (smaller) pedals to launch two other functions on the app.

- **Convenience**

Permits hands-free reading of vast libraries of scanned, purchased, or freely downloaded digital content. There is no need to stop playing your musical instrument or wait for an assistant to turn the page.

- **Reliability**

Turns one page at a time with 100% accuracy. Navigation of digital content eliminates the risk of turning multiple pages at once, which is a problem typically associated with physical books.

- **Versatility**

Press a mode button to select pedal functions:

- (1) Volume-/Volume+/Stop/Play
- (2) Previous/Next/Stop/Play
- (3) Left/Right/Up/Down arrows
- (4) PageUp/PageDown/Up/Down arrows
- (5) LeftClick/RightClick/Space/Enter

The pedals may be reprogrammed for added versatility. Download the free Windows and Mac software from www.pageflip.com.

- **Robust Operation**

A Repeat switch enables continuous scrolling while the pedal is pressed down. Disable this feature for musical performances to prevent inadvertent page turns in case of a slow pedal release or to rest your foot on the pedal between page turns.

- **Wireless or Wired Connectivity**

The PageFlip Dragonfly communicates wirelessly with the computer up to a range of 10 meters using standard Bluetooth 3.0 technology. For those users who lack a Bluetooth-equipped device or simply prefer a wired connection, the pedal can be connected directly to their device via the supplied USB cable.

- **Compatibility**

Works with iPad and Android tablets using select apps that accept keyboard commands, such as arrow keys. Compatible apps are listed on www.pageflip.com. Also works with any Windows, Mac, or Linux computer. Users may purchase a Bluetooth USB dongle from www.pageflip.com to bring the full benefits of this wireless pedal to any computer that is not Bluetooth compliant.

- **Unique Pairing**

Multiple pedals can be operated in the same room without interference. The Bluetooth pairing process uniquely establishes wireless connectivity between the pedal and one computer. Pairing is automatically achieved without a passkey once the pedal is selected among a list of discovered Bluetooth devices on the tablet/computer.

- **Auto Power-Off Function**

PageFlip Dragonfly automatically turns itself off 30 minutes after the last operation is performed. The pedal has a battery life of 200 hours of continuous page turning, or about 200,000 page turns. The pedal LEDs emit a triple flash warning to indicate a low-battery condition.

- **Portability**

Small sturdy pedal operates on AC power or two AA batteries.

- **Technical Support**

Additional information can be found at www.pageflip.com.

3 PACKAGE CONTENTS

This package contains the following items. If any items are missing, please contact the dealer where you purchased the product.

1. PageFlip Dragonfly Bluetooth/USB Quad Pedal
2. USB cable (6 feet)
3. Quickstart Guide (English/German/French/Spanish)



Figure 1: Package contents: PageFlip Dragonfly and USB cable.

4 BASIC OPERATION

Please read the operating instructions carefully before first use. PageFlip Dragonfly is designed to work with a wide variety of software to display electronic documents. It is important that the user closely follow the directions below in order to maximize performance, reliability, and reading pleasure.

4.1 Battery Installation

1. Turn off the PageFlip Dragonfly pedal before inserting the batteries.
2. Remove the battery cover on the bottom of the pedal.
3. Install two new AA batteries.
4. Slide the battery cover back on.

Note: To conserve battery power, turn off device when not in use. The unit automatically goes to sleep after 30 minutes of inactivity, but can awake instantly upon a pedal tap. You will notice that the pedal is asleep if the POWER switch is set to On but no LEDs are lit next to the pedal mode buttons. A simple tap will initiate Bluetooth pairing immediately. It is advisable to press the pedal once before using in a performance to make sure that the pedal will not go to sleep soon. Press the other pedal to return to the original page.

4.2 AC Adapter

In addition to being battery-operated, PageFlip Dragonfly may also be powered by connecting it to a computer using the supplied USB cable (Fig. 1). Simply plug one end of the power cable into the micro-USB outlet on the rear of the PageFlip Firefly (Fig. 2(a)) and plug the other end into a computer's USB port. The pedal can also be plugged into the wall via a USB AC adapter (Fig. 2(b)), such as those included with cell phones or tablets.



Figure 2: (a) Rear view of PageFlip Dragonfly. Attach the micro-USB end of the 6' USB cable into the rear micro-USB outlet and connect the other end into a computer USB port or (b) any USB AC adapter, such as those found on iPads and iPhones.

4.3 Powering On the Pedal

1. Slide the POWER switch to the On position.
2. The pedal will attempt to pair itself with a computer.
3. For all new pairings, please refer to the Pairing instructions in Sec. 4.4.
4. For existing pairings, an LED will blink quickly (every second) for up to 30 seconds.
5. The LED will blink slowly (every four seconds) once the pairing is re-established.
6. Make sure the paired computer is on and awake.



Figure 3: Top view of PageFlip Dragonfly control panel.

4.4 Bluetooth Pairing

The following instructions assume that your tablet or computer is equipped with Bluetooth 2.1 or later. If you do not have Bluetooth, you may purchase a Bluetooth USB dongle from www.pageflip.com to bring the full benefits of this wireless pedal to any computer that is not Bluetooth compliant.

1. Press BLUETOOTH RESET (Fig. 2) to make pedal discoverable.
2. Five LEDs will flash in sequence while pedal is in discovery mode.
3. Enable Bluetooth on the computer to be paired.
4. Show Bluetooth devices on the computer and select "Quad Pedal."
5. Note: "Keyboard" may appear momentarily before "Quad Pedal."
6. The LED of the current pedal mode (Sec. 4.5) will now flash slowly (once every four seconds).

4.5 Pedal Mode Selection

The PageFlip Dragonfly emulates a standard keyboard and works with any software that uses keyboard strokes to navigate through digital files or launch app functions. For added versatility, the user may select among five preset pedal modes, as shown in Table 2. Simply press a button (Fig. 3) to change the mode. A flashing LED confirms the mode selection. The bottom two icons around each mode button designate the pedal modes for the primary (larger) left and right pedals. The top two icons around each mode button designate the pedal modes for the secondary (smaller) left and right pedals that sit on top of the primary pedals. The functions of these two sets of pedals are described in the two tables below.

Primary Pedal Modes	Function
Stop/Play	Stop and play/pause app functions
Stop/Play	Stop and play/pause app functions
Up/Down Arrow	Turn page or move cursor
Up/Down Arrow	Turn page or move cursor
Space/Enter	Press Space bar or Return key

Table 1: Five preset primary pedal modes and their functions.

Select the mode that achieves your intended goals. Results may vary based on the software. For instance, some software applications use PageUp/PageDown to advance between pages/screens, and use the arrow keys to move the cursor between characters or rows. Other programs accept the PageUp/PageDown or arrow keys interchangeably. Image viewers typically respond to Left/Right arrow but not Up/Down arrow. Experiment with the different modes and see which works best for your application. These options are made available to enhance pedal versatility by making it responsive to the widest array of software.

Secondary Pedal Modes	Function
VolumeDown/VolumeUp	Change the volume
Previous/Next	Go to previous or next song
Left/Right Arrow	Turn page or move cursor
PageUp/PageDown	Turn page
Left/Right Mouse click	Click left or right mouse button

Table 2: Five preset secondary pedal modes and their functions.

The default mode of the pedal immediately after the pedal is first paired with the computer or laptop is the left/right and up/down arrow keys (middle mode button). Thereafter, the pedal will assume the last pedal mode before the pedal was turned off or went to sleep.

4.6 Reprogramming the Pedal Modes

1. Visit www.pageflip.com/pages/software.html or select the Software link at the bottom of the Dragonfly page (Shop->PageFlip Dragonfly) on www.pageflip.com.
2. Select the Windows or Mac link in the instructions to download the appropriate version of the software.
3. Pair the pedal to a Windows or Mac computer using Bluetooth (Sec. 4.4).
4. Run the software to see the interface shown in Fig. 4.
5. Note that "Connected" appears at the top to indicate a paired Dragonfly pedal. Pair the pedal to the computer if "Disconnected" appears.
6. Five mode settings are listed for the left/right primary and secondary pedals.
7. Click on any field and type a character, multi-key combination, or hotkey, to reprogram the pedals.
8. Select "Save" to save the settings and confirm (Fig. 5).
9. Press MODE RESET (Fig. 2) or "Factory Settings" in software to restore default pedal modes.

PageFlip Dragonfly User Guide 4.6 Reprogramming the Pedal Modes

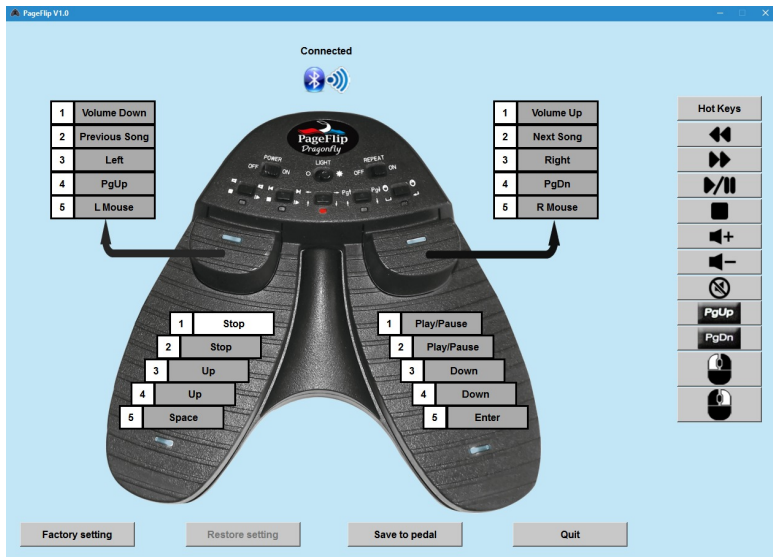


Figure 4: Initial window of pedal reprogramming software

PageFlip Dragonfly User Guide 4.6 Reprogramming the Pedal Modes

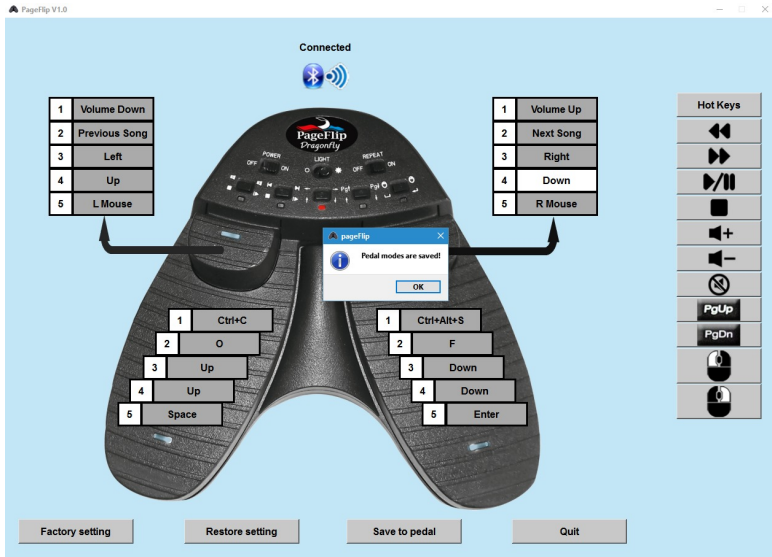


Figure 5: Move cursor into fields and type a character, multi-key combination, or select a hotkey to reprogram mode setting. Press "Save" to save settings and confirm. Notice that the external pedals may have different values than the integrated pedals.

4.7 Triggering the Pedal

The PageFlip Dragonfly Bluetooth pedal can be triggered by:

1. tapping the left or right primary (larger) pedal of the PageFlip Dragonfly
2. tapping the left or right secondary (smaller) pedal of the PageFlip Dragonfly



Figure 6: Primary (larger) and secondary (smaller) pedals. Each of these four pedals has an LED light that can be turned on for use in dim venues.

4.8 Autorepeat Function

The PageFlip Dragonfly features an autorepeat function that may be set by the REPEAT switch (Fig. 3). If autorepeat is on, a continuous stream of commands is sent to the computer as long as the pedal is pressed down. This behavior, which is identical to that of a keyboard, is useful for fast browsing or scrolling.

Enable Autorepeat

1. Slide the REPEAT switch to the On position.
2. Tap pedal quickly to turn one page.
3. Tap and hold the pedal to turn successive pages quickly.

Disable Autorepeat

1. Slide the REPEAT switch to the Off position.
2. Tap pedal slowly or quickly to turn one page.

For musical practice or performance, it is recommended to disable the autorepeat function. This prevents turning multiple pages inadvertently if the pedal is held down too long. This also permits the user to rest their foot on the pedal until the next page is turned with another foot tap.

4.9 Virtual iPad Keyboard

The PageFlip Dragonfly emulates a keyboard while interacting with the computer. This may prevent the virtual iPad keyboard from appearing when the focus is brought to a text field. In order to eject the virtual keyboard to make it visible, please press the current mode button that lies next to the blinking LED. The current mode will remain unchanged while successive presses to that button will toggle the appearance and disappearance of the virtual keyboard on the iPad.

4.10 Compatible Apps

Any app that responds to a Bluetooth keyboard will work equally well with PageFlip Bluetooth pedals. A list of compatible apps for iPad and Android tablets can be found on www.pageflip.com/pages/apps.html.

Incompatible apps are typically limited to the use of screen taps and swipes. The eBooks and Amazon Kindle apps on the iPad are two instances of such apps. Fortunately, there is a way to use PageFlip Bluetooth pedals to interact with such apps by using the left and right pedals to mimic a swiping gesture (e.g., swipe left or swipe right). Just follow these instructions for use on iPads:

1. Go to Settings → General → Accessibility → Switch Control
2. Tap Switches and then tap "Add New Switch"
3. Choose "External" as the source. The message "Activate your external switch" will appear.
4. Press the left pedal and then name the pedal: Left pedal
5. Choose a switch action for that pedal: choose "Move to Previous Item"
6. Now do the same for the right pedal:
7. Tap "Add New Switch".
8. Choose "External" as the source. The message "Activate your external switch" will appear.
9. Press the right pedal and then name the pedal: Right Pedal
10. Choose a switch action for that pedal: choose "Move to Next Item"
11. Create a Recipe by going back to the main Switch Control page and tap "Recipes"
12. Tap "Turn Pages"
13. Under the Switch section tap "Assign a Switch"
14. Tap "Left pedal" and choose "Left to Right Swipe"
15. Tap "Add New Switch"
16. Tap "Right pedal" and tap "Right to Left Swipe"
17. Launch the recipe by going back to the Recipes screen and tap Launch Recipe.
18. Tap "Turn Pages".
19. Turn Switch Control On

5 PRODUCT SPECIFICATION

Item	Specifications
Model Name	PageFlip Dragonfly
Model Number	PFDRAGONFLY-01
Dimensions	7.0 x 6.7 x 2.2 inches (178 x 170 x 56 mm)
Weight (w/o batteries)	17.2 ounces (488 grams)
Power Requirements	3V, 30mA (2 AA batteries)
Power Consumption:	
Operating Mode	10.5 mA
Bluetooth Pairing	1.8 mA
Standby	9.0 mA
Sleep	0.04 mA
Pedal light	5 mA additional
Battery Life (2 AA batteries):	
Pedal light off	400 hours of continuous turning (200K page turns)
Pedal light on	200 hours of continuous turning (100K page turns)
Output Power	-6 dBm to 4 dBm
Operating Distance	10 meters
Operating Frequency	2402-2480 MHz
Operating Temperature	32° – 140° F (0° C - 60° C)
Storage Temperature	-40° – 176° F (-40° - 80° C)

LED	Operating Condition
Off	Pedal powered off or asleep
Solid	Connected to external power source
All LEDs flash	Bluetooth discovery mode (BLUETOOTH RESET)
Quick flash (1 sec)	Attempting to pair with computer
Slow flash (4 sec)	Paired with computer
Three quick flashes	Low-battery condition

6 PRODUCT COMPARISON

	Butterfly	Firefly	Dragonfly
Pedals	2	2	4
Mode Buttons	3	5	5
Silent pedal action	✓	✓	✓
Wireless (Bluetooth)	✓	✓	✓
Wired connectivity (USB)		✓	✓
Illuminated pedals		✓	✓
Programmable modes		✓	✓
Autorepeat		✓	✓
L/R Auxiliary outlets		✓	
Auto sleep period*	30 mins	30 mins	30 mins
Power	2 AA	2 AA or AC**	2 AA or AC**
Dimensions	6.8" x 5.5" x 1.4"	6.8" x 5.8" x 1.4"	7.0" x 6.7" x 2.0"
Weight	Hefty (13.0 oz)	Heftier (15.2 oz)	Heftiest (17.2 oz)
Battery life (approx)	1 year	1 year	1 year
Warranty	1 year	1 year	1 year
Price	\$89.95	\$109.95	\$129.95

Table 3: Product comparison.

* Inactivity period before pedal enters sleep mode.

** Use two AA batteries or plug into USB AC adapter.
Batteries and adapter are not included.

Preset Pedal Modes	Butterfly	Firefly	Dragonfly
Up/Down arrow	✓	✓	✓
Left/Right arrow	✓	✓	✓
PageUp / PageDown	✓	✓	✓
Left/Right mouse click		✓	✓
Space / Enter		✓	✓
Volume+ / Volume-			✓
Play/Pause / Stop			✓

The five main advantages that the Firefly has beyond the Butterfly are: (1) programmable mode buttons, (2) illuminated pedals, (3) wireless OR wired operation, (4) heft/ruggedness, and (5) auxiliary outlets for external pedals that can make Firefly a quad pedal system.

The main advantages that the Dragonfly has beyond the Firefly are: (1) integrated quad pedal system, (2) compact design that fits quad pedal into a dual pedal footprint, and (3) added heft/ruggedness. The benefit of a quad pedal is that it allows the user to trigger four app actions instead of two. For instance, two pedals can be configured to turn pages while the other two pedals can advance through a setlist, pop up a search box, launch a metronome, control audio playback and volume, and more.

7 MAINTENANCE

Before cleaning the PageFlip Dragonfly, the following is recommended:

1. Turn off the power
2. Unplug the power cord
3. Take out the batteries

Gently wipe the PageFlip Dragonfly surface with a soft, dry, lint-free cloth.

Caution:

Do not use water, liquid detergent or solvents for cleaning. Liquids might drip into the device's mechanical or electronic parts and cause damage.

8 WARRANTY

PageFlip offers a one-year warranty on the PageFlip Dragonfly Bluetooth pedal. The warranty commences on the date of purchase. Should a unit fail during the warranty period, PageFlip will, at its option, repair or replace the damaged unit. Repaired or replaced units will be covered for the remainder of the original warranty period. This warranty does not apply to units that, after being examined by PageFlip, have been found to have failed due to customer abuse, mishandling, alteration, improper installation, or negligence. Furthermore, the warranty does not apply to defects that have negligible effect on the value or operation of the unit.

Defective units must be returned postage paid as a complete unit to PageFlip or its authorized distributor. Proof of purchase and a letter explaining the problem must accompany the returned unit. The warranty becomes void if repairs are undertaken by unauthorized persons and if original PageFlip parts are not used.

Products no longer covered by a warranty may be repaired for a nominal fee. All repairs are warranted for one year. Before returning a product for refund or repair, please send email to support@pageflip.com with a description of the problem. PageFlip will respond with instructions on how to expediently resolve the matter. Repair charges must first be approved for products no longer covered by the warranty.

9 GUARANTEE

PageFlip offers a 30-day money back guarantee if our products do not meet your needs or expectations. Products must be returned postage paid in new condition in the original packaging to honor this service. A 20% restocking fee applies. Contact support@pageflip.com for instructions.

Contact us at:

PageFlip, Inc.

Woodmere, NY

USA

support@pageflip.comwww.pageflip.com

10 FAQ

Visit the Frequently Asked Questions (FAQ) tab on www.pageflip.com for the most up-to-date version of these frequently asked questions.

What are the differences between the PageFlip pedals?

The PageFlip Butterfly is a new and improved version of our original Cicada pedal. It is hefty, rugged, and features large silent tactile pedals. It is far better than competing products that offer only small buttons or unresponsive membrane switches. The PageFlip Firefly is our best-selling premium pedal. It has additional features beyond the Butterfly, including illuminated pedals for use in dim venues, programmable pedal modes, wireless (Bluetooth) or wired (USB) operation, added heft and ruggedness, and auxiliary outlets for external pedals that can turn the Firefly into a quad pedal system. Try the PageFlip Dragonfly if you want a fully integrated, compact quad pedal. Please refer to the comparison chart shown in Table 3.

Does the pedal work with iPad and Android tablets?

Yes, PageFlip pedals work with all iPad versions and all Android tablets supporting Bluetooth 3.0 or later. However, the pedals only work with apps that accept keyboard commands. The most popular compatible iPad apps are Forscore, unrealBook, OnSong, Deepdish Gigbook, and Newzik. The most popular compatible Android apps are MobileSheets, SongBook, Fakebook, GuitarTapp Pro, and ezPDF Reader. The list of compatible software is sure to grow. Please check www.pageflip.com/pages/apps.html for updated information.

Does the pedal work with Surface tablets and Windows/Mac software?

Yes. PageFlip pedals emulate a keyboard that emits key presses. The

pedal's emitted signals are determined by the pedal mode buttons. Any software on a computer or tablet (e.g., Surface Pro) running Windows or MacOS will be able to interpret these key presses, whether they were triggered by tapping the pedal or any computer keyboard. Try our pedals with Power Music Software on Windows (www.powermusicsoftware.com).

Does the pedal work with the Kindle or iBooks apps?

PageFlip pedals work with Kindle Fire HD. Older Kindle hardware does not support Bluetooth or include a USB port. However, Kindle software for the PC and Mac works with the pedal. Now, you can also turn pages in the Kindle and iBooks app on iPads by following the instructions given in Sec. 4.10.

Which apps are known to work with the pedal?

PageFlip pedals work with any app that responds to PageUp/PageDown key presses or arrow keys. Visit www.pageflip.com/pages/apps.html for a list of compatible apps. In general, if the app works with a Bluetooth keyboard, it will work with our pedals.

How do I reprogram the mode functions?

Visit www.pageflip.com/pages/software.html to download our free Windows or Mac software to reprogram the pedal functions. Pair the Firefly or Dragonfly pedal to your computer using Bluetooth. Do not use USB to connect the pedal to the computer during this reprogramming process. Run the PageFlip software to display an image of your pedal with overlaid text fields for specifying the desired mode functions. The program should show "Connected" to confirm that the pedal is properly paired to the computer. If not, exit the program and attempt to re-pair the pedal to the computer before running the program again. Once the program confirms that the pedal is "Connected" to the computer, click on each pedal field and press a keyboard button or on-screen button to reprogram the

selected field. Press "Save" to save the entries. A message will be displayed to confirm the pedal status.

Where can I find digital sheet music to download?

The best source for free classical music is the International Music Score Library Project (IMSLP) at imslp.org. Extensive collections of popular music can be found at onlinesheetmusic.com, sheetmusicdirect.com, musicnotes.com, sheetmusiccore.com, or everynote.com. CD Sheet Music from Hal Leonard (halleonard.com) is a great source of scanned classical music conveniently available on CDs. Search the internet for "sheet music download" to get updated results.

How do I import my books or sheet music into my computer?

You must scan the physical pages. For best results, try to avoid the shadows near the book spine by using a flatbed book scanner such as the Plustek OpticBook 3600. Visit www.plustek.com for more details. A more cost-effective solution is to use a great new service provided by 1dollarscan.com. Simply mail them your books, and they will cut off the binding and scan the loose pages at 300dpi for \$1 per set of 100 pages. Additional charges apply for scanning at 600dpi or to apply a deskewing algorithm. Visit 1dollarscan.com for more information. Please note that this is a destructive process. You will get a pdf file for each book you send but you will sacrifice your book in the process. They discard the book after chopping off the binding and scanning the pages.

Can I connect other foot pedals to trigger page turns?

The Firefly features L/R jacks on the rear of the pedal that you can use to plug other foot pedals. The L/R jacks accept 1/8" mono plugs. We deliberately designed this capability to accommodate the preferences of our diverse users. Therefore, if you have any particular pedal or switch that you prefer over the Firefly's integrated pedal, then by all means plug

it in! The Butterfly and Dragonfly do not have L/R jacks for external pedals.

Why are the LEDs not lit when I turn on the pedal?

Make sure to install two fresh AA batteries in the pedal. The Firefly/Dragonfly pedal may also be used without batteries by plugging it into the wall using the supplied USB power cable and any USB AC adapter, such as those already included with iPads/iPhones. It may also be plugged into a computer's USB port for power.

What is the current pedal mode?

An LED is lit next to the current mode setting of the pedal. Simply press a different mode button to change the setting. The LED will turn off once the pedal enters sleep mode after an inactivity period of 30 minutes.

Why is the pedal not turning pages?

Confirm that the device "Dual Pedal" (Butterfly), "Premium Pedal" (Firefly), or "Quad Pedal" (Dragonfly) is paired to your tablet or computer and that the correct pedal mode is selected. Some software may require arrow keys while others may require PageUp/PageDown or other keystrokes. Try several modes until you find one that works. If you reprogrammed the mode buttons on the Firefly/Dragonfly, press the "Mode Reset" button on the rear of the pedal to reset to factory defaults. Note for unrealBook users on the iPad: you must go to the app's settings (tap the gear icon) and set Network → Airtturn Setup → Airtturn Support to ON. NextSong switches can be left OFF. The app will then respond to the Up/Down Arrow keys.

Why is the pedal not turning pages on the unrealbook app?

Confirm that the device "Dual Pedal" (Butterfly), "Premium Pedal" (Firefly), or "Quad Pedal" (Dragonfly) is paired to your tablet or computer and that the Up/Down arrow mode is set on the pedal. This is indicated by a blinking light next to the middle mode button. Then, make sure you go to

the app's settings (tap the gear icon) and set Network → Airturn Setup → Airturn Support to ON. NextSong switches can be left OFF. The unreal-book app will then respond to the Up/Down Arrow keys.

What are the different operating conditions signified by the LED?

A solid LED means that the pedal is plugged into a power source (Firefly/Dragonfly only). If the RESET button is pressed, the pedal enters Bluetooth discovery mode and all the LEDs flash in sequence. The LED flashes once per second after the pedal is turned on and is attempting to establish a Bluetooth connection with a paired device. The LED flashes once every four seconds to signal that the pedal is already paired. Repeated bursts of three quick flashes signal a low-battery condition. Please replace the two AA batteries once you see this triple-flash warning.

Why did the pedal automatically shut down?

In an attempt to preserve battery life, the pedal enters sleep mode after an inactivity period of 30 minutes. Tapping a pedal will make the unit attempt to re-establish the Bluetooth connection. This may take a few seconds. It is not possible to disable this sleep function when operating in battery mode. The Firefly and Dragonfly pedals will never go to sleep if you use the supplied USB cable to connect the pedal to a USB AC adapter or a computer. You will know that the pedal is asleep if the pedal is turned on and there are no blinking lights. If the pedal is awake, a light will blink once every four seconds. It is advisable to tap the pedal once and verify that it turns pages when you want to use the pedal after a long delay lasting over 30 minutes.

What do I do if Bluetooth pairing is unsuccessful?

Delete the device displayed in the host and press the BLUETOOTH RESET button on the pedal. Initial discovery mode may take up to 10 seconds. Follow your computer's instructions on how to pair Bluetooth de-

vices.

Is it necessary to pair the pedal each time I use it with the same device?

No, you must only pair the pedal once to a device (e.g., iPad/Mac/Windows computer). There is no need to pair it again once you turn on the pedal or device again. If you find that the pedal loses its pairing, then contact customer support. The only time you need to pair the pedal again with a device is if you paired the pedal to another device in the interim. The pedal only remembers one pairing at a time.

Can the pedal work with computers that have no Bluetooth?

Yes. To maintain wireless Bluetooth connectivity, simply plug in an optional USB Bluetooth dongle (3.0 or later) into the computer's USB port. The dongle is available in the PageFlip online store. Follow your computer's instructions for adding Bluetooth devices. On the Firefly and Dragonfly, you also have the option of connecting the pedal to the computer with the USB cable (included) for wired connectivity.

Do I need to use a Bluetooth dongle?

The dongle is only needed if you are using the pedal with a tablet or computer that does not support Bluetooth 3.0 or later. Note that the dongle is never needed for iPads or Macs since they all have Bluetooth support. Windows and Linux computers may come without integrated Bluetooth support so they are the only candidates for using the dongle. Dongles can be purchased in the PageFlip online store.

Can the pedal turn pages at timed intervals?

No. All PageFlip pedals turn a page only when the user triggers it by tapping a pedal.

When is the Autorepeat mode appropriate?

The Firefly and Dragonfly pedals feature an Autorepeat switch that can be used to emit a rapid succession of commands as long as the pedal is pressed down. Turn on Autorepeat if you are interested in fast browsing or scrolling. Turn off Autorepeat to avoid multiple pages from turning at once if you inadvertently press the pedal too long. It is therefore best to turn off Autorepeat during a performance.

Can I use the virtual iPad keyboard and the pedal at the same time?

Press the current mode (CM) button, which lies next to the blinking light, to eject/hide the virtual keyboard. After you press the CM button once, you will be able to access the virtual keyboard to enter text whenever you need it for the duration of your session. Test it by tapping into a text field and confirming that the virtual keyboard appears on the screen.

Can the pedal withstand rugged abuse?

All PageFlip pedals are made of highly durable plastic that can withstand stomping and rugged use. The pedals were designed to meet these critical requirements for our most demanding users.

What can I do to see the pedal more clearly in low-light situations?

The black pedal may be hard to see when using it in dim lighting. Firefly and Dragonfly users can simply turn on the Light switch on the front panel to illuminate the pedals. Butterfly users can try to apply fluorescent self-adhesive tape to the pedals to make it glow in the dark. The Firefly dual pedal and Dragonfly quad pedal are the best choices for users who play in dim venues.

Why the names "Butterfly," "Firefly," and "Dragonfly"?

The Butterfly pedal derives its name from the butterfly insect whose graceful wings inspired the pedal's sleek design. The PageFlip Firefly features

illuminated pedals so its name is inspired by the gentle glow emitted by the firefly insect. The PageFlip Dragonfly is a quad pedal so it is named after the majestic dragonfly, which has a total of four wings.

Please visit us at www.pageflip.com for additional information, including manuals and videos. Please send email to support@pageflip.com with any technical questions or comments.